

EUROPEAN
SCIENCE
FOUNDATION

FWF

Der Wissenschaftsfonds.



'The impact of the environment on innate immunity: at the defence frontier – the biology of innate immunity' is the first of two planned conferences, one in 2007 and one in 2009. In the 2007 conference we will set the stage for discussing basic knowledge about one of the most important defence functions of organisms against parasitic disease: the innate immune system.

The topics covered in this conference will include immunity from the cellular and molecular level, through to the ecological level; how immune specificity is enabled in invertebrates; the impact of stress and fear; a theoretical angle on innate immunity; the interplay between innate immunity and sex and evolution; and finally, the interaction between innate immunity and social life.

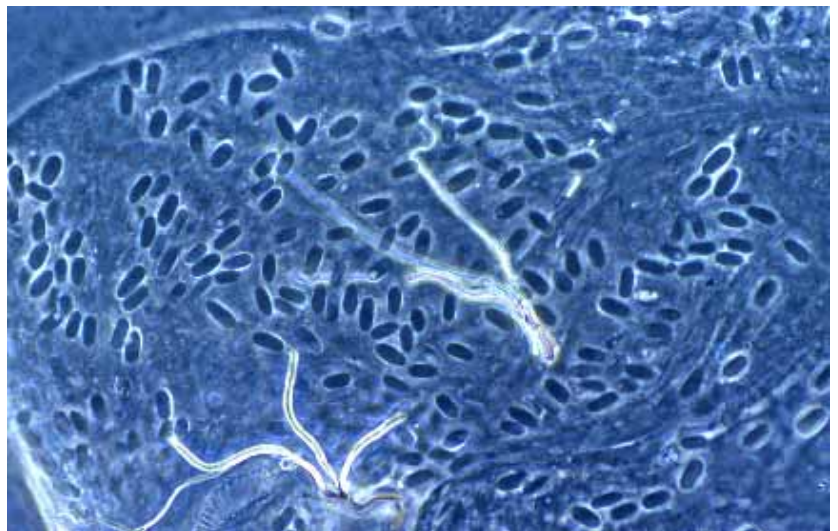
The conference will be quite intimate – with around 100-120 participants, 21 of whom will be invited speakers. Each invited speaker will talk for 30 minutes, mainly on new or unpublished findings, and each talk will be followed by 15 minutes discussion time. The emphasis is very much upon discussion and there is plenty of time within the programme to make this possible. There will also be a formal poster session on the first day to give the opportunity to get to know one another early on.

RESEARCH CONFERENCES

ESF-FWF Conference in Partnership with LFUI The Impact of the Environment on Innate Immunity: At the Defence Frontier - The Biology of Innate Immunity

Universitätszentrum Obergurgl (Ötz Valley, near Innsbruck) • AT
22-27 April 2007

Chair: Paul Schmid-Hempel ETH Zürich, CH
Vice-Chairs: Sophie Armitage Copenhagen U., DK
& **Joachim Kurtz** Münster U., DE



Invited Speakers will include

S. Adamo Dalhousie U., Halifax, CA
R. Antia Emory U., Atlanta, US
M. Boots Sheffield U., UK
G. Dimopoulos Johns Hopkins U.,
Baltimore, US
D. Ebert Basel U., CH
S. Frank California U., Irvine, US
D. Hultmark Umea U, SE
B. Lazzaro Cornell U., Ithaca, US
B. Lemaître CNRS, Gif/Yvette, FR
T. Little Edinburgh U., UK
S. Loker New Mexico U.,
Albuquerque, SL

P. Matzinger NIH, Bethesda, US
A. Read Edinburgh U., UK
J. Rolff Sheffield U., UK
R. Rosengaus Northeastern,
Boston, US
D. Schmucker Dana-Farber
Cancer Institute, Boston, US
H. Schulenburg Tübingen U., DE
M. Siva-Jothy Sheffield U., UK
K. Söderhäll Uppsala U., SE
T. Trenczek Giessen U., DE
M. Zuk California U., Riverside, US

Application Form & Programme available from
www.esf.org/conferences/07223

Closing Date for Application
20 November 2006