



RESEARCH CONFERENCES

ESF-FWF Conference in Partnership with LFUI

The Impact of the Environment on Innate Immunity: The Threat of Diseases

Universitätszentrum Obergurgl (Ötz Valley, near Innsbruck) • Austria
4-9 May 2009

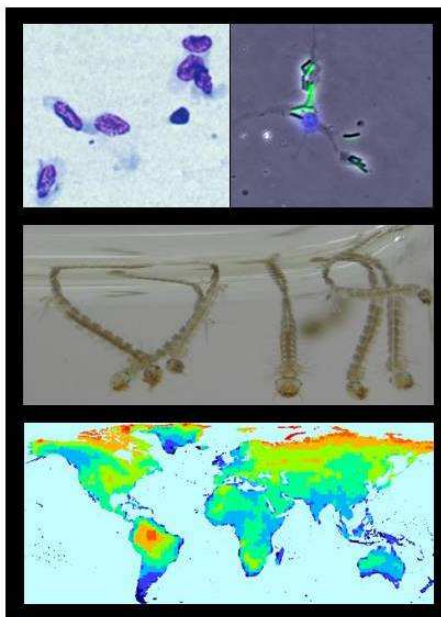
Chair: Joachim Kurtz, University of Münster, DE

Co-Chairs: Sophie Armitage, University of Münster, DE and

Paul Schmid-Hempel, ETH Zürich, CH

The threat of diseases: considering the options - is the second in a series of two conferences on the impact of the environment on innate immunity. The first conference was held in April 2007, and set the stage for discussing basic knowledge about one of the most important defense functions of organisms against parasitic diseases: the innate immune system.

In May 2009 the follow-up conference will build upon the knowledge gained in the 2007 conference and will have a more applied angle. Its highlights will include vectors of disease – both an introduction to the model organisms, and what the prospects are for immunological interference in these organisms; innate defense molecules for use as antibiotics, environmental stressors and global change, emerging disease and innate immunity, and how our knowledge can be used to develop strategies against the spread of new diseases.



Invited Speakers

George Christophides, Imperial College, UK
Andrew Dobson, Princeton U., US
Jay Evans, USDA, US
Sylvain Gandon, CNRS, FR
Sunetra Gupta, U. of Oxford, UK
Achim Hoerauf, University Clinic, DE
Peter Hudson, Penn State, US
Hilary Hurd, Keele U., UK
Jukka Jokela, Swiss Federal Institute of Aquatic Sciences & Technology, CH
Jacob Koella, Imperial College, UK
Richard Lucius, Humboldt U., DE
Yannis Michelakis, CNRS, FR
Laszlo Otvos, Temple U., US
Richard Pipe, Marine Biological Association, UK
Thierry Rigaud, U. Bourgogne, FR
Eugene Rosenberg, Tel Aviv U., IL
David Schneider, Stanford U., US
Bernd Sures, U. Essen, DE
Joanne Webster, Imperial College, UK
Ken Wilson, Lancaster U., UK
Mark Woolhouse, U. Edinburgh, UK
Michael Zasloff, Georgetown U., US
Arturo Zychlinsky, Max Planck Institute, DE

Application Form & Programme available from

www.esf.org/conferences/09223

Closing Date for Application: 8 February 2009

European Science Foundation | Research Conferences Unit
149 avenue Louise | Box 14 | Brussels | Belgium
Tel: + 32 (0)2 533 2020 | Fax: +32 (0)2 538 8486
Email: conferences@esf.org | www.esf.org/conferences